

EpiQMAx

Decoding epigenetics

A low-angle, rear-view shot of a person's legs as they run on a paved road. The person is wearing black shorts, white socks, and running shoes. The road has a yellow dashed line down the center and stretches towards a horizon under a dramatic, cloudy sky at sunset or sunrise. The overall tone is motivational and forward-moving.

Mission statement:

Provide epigenetic
profiling for better
quality of life

What we want to do with EpiQMAx is accelerate the world's transition to 'omics technologies and personalized products. At EpiQMAx we discover biomarkers for different industries: from medical to nutraceutical, sports and other end-consumer industries.



The solution

A new
generation
technology
platform to
develop **panels**
of **biomarkers**



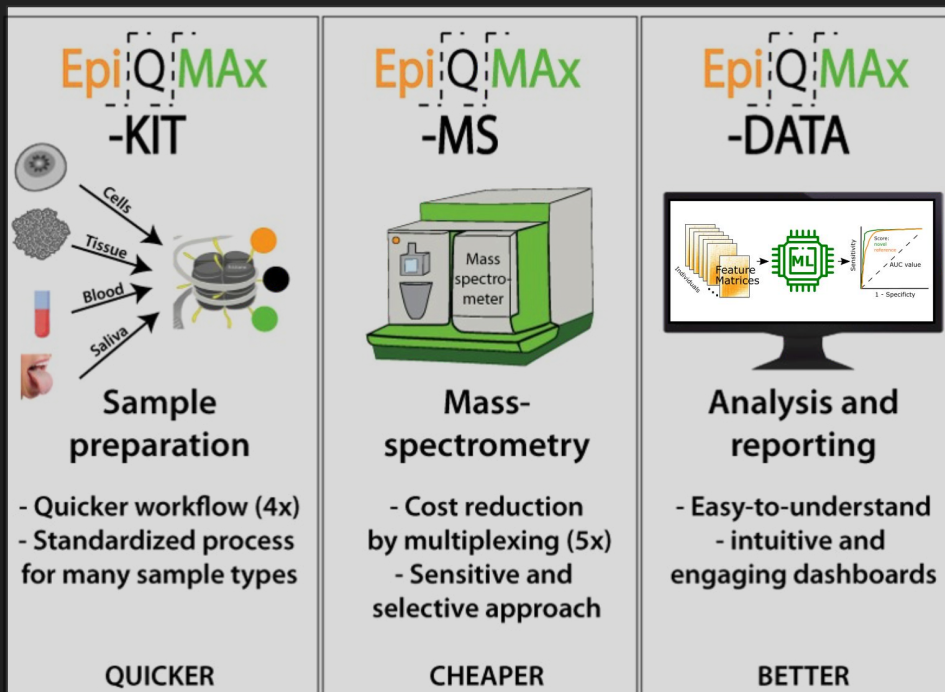
The solution

A platform that enables the
high throughput screening
& validation of biomarkers
in truly large cohorts

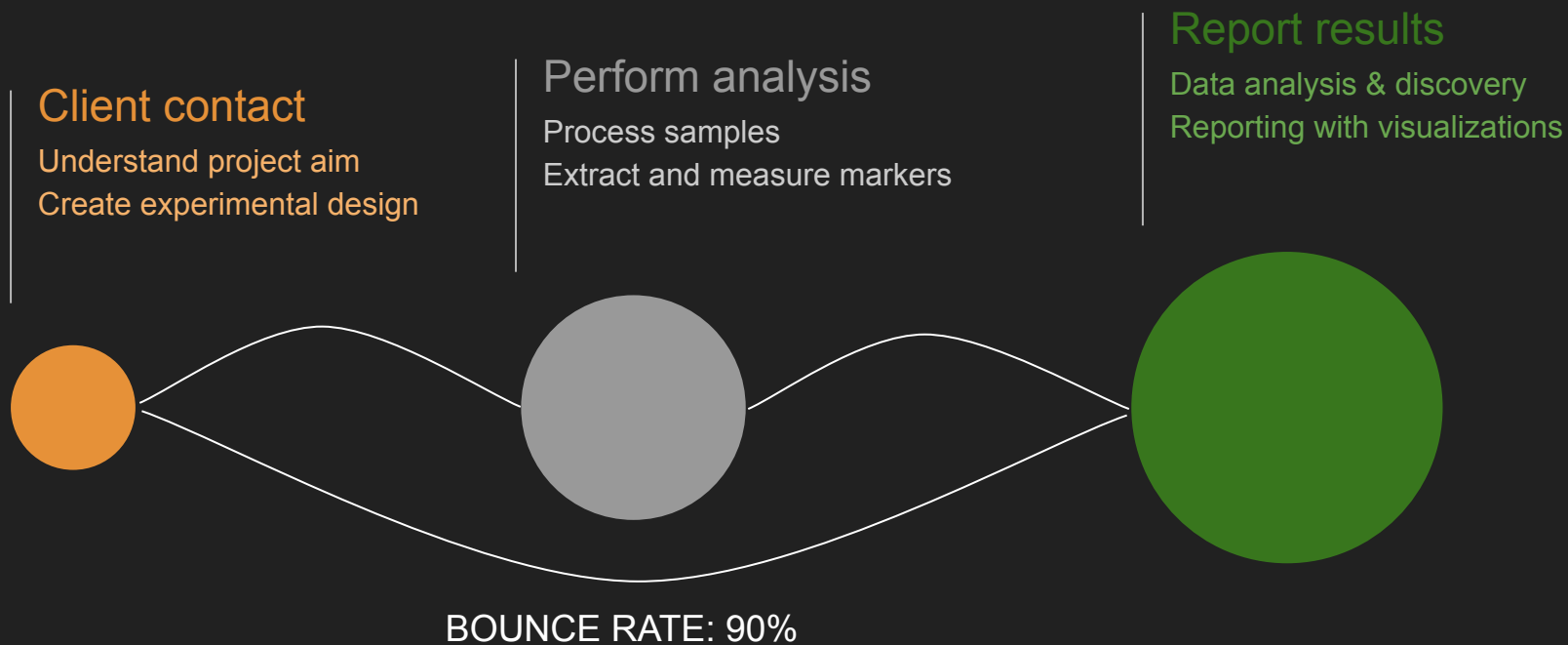
 **Product**

EpiqClinInsights

An innovative workflow that combines KIT, Mass spectrometry and Software to measure histone and protein modifications



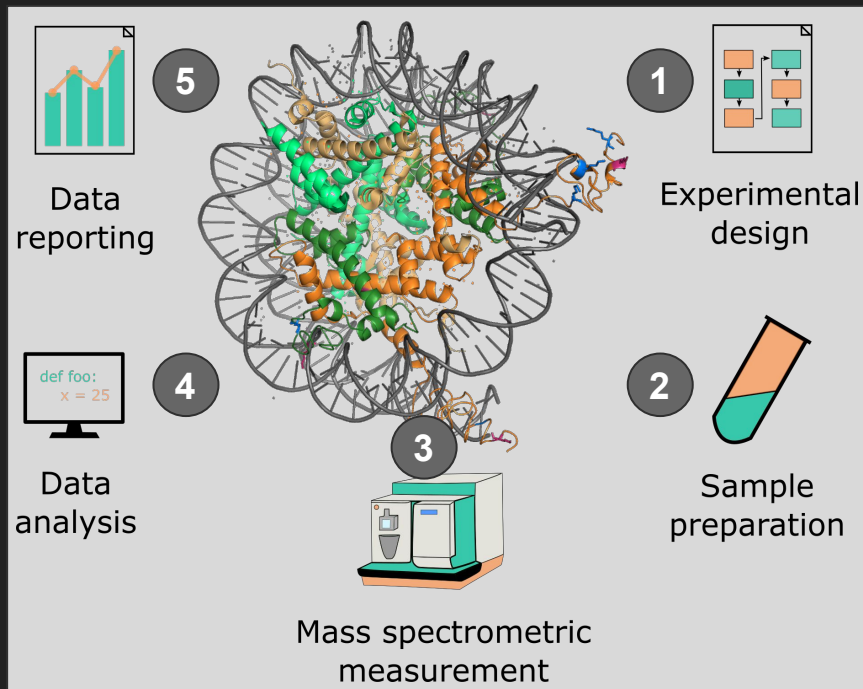
How it works



A fee for service model

Industry
price

850
€/sample



Academic
price

500
€/sample



Scientific
Publication

Competitive advantages



Quickest
service
(~ 7 days)



Competitive
price
(4x cheaper by
multiplexing)



Able to detect
multiple
markers and
co-occurrence



Reports with
visualizations
and statistical
analyses



Consultancy:
long standing
experience on
the field

The founding team

“Experts in Epigenetics and Mass Spectrometry for data acquisition and analysis”



Dr. Victor Solis
CTO/CSO

Bioinformatics, Programming,
Data analysis, Mass spec,
Proteomics



Dr. Moritz
Völker-Albert
CEO

Biochemistry, Biomedicine,
Mass spec, Epigenetics,
Proteomics



Dr. Axel Imhof
Sci. Advisor

Biochemistry, Biomedicine,
Mass Spec, Epigenetics,
Proteomics

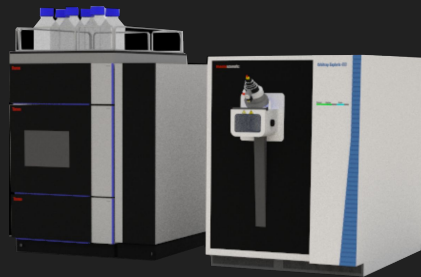
Other members: Michael Günsel (Head of Mass Spec); Tea Speljko (Head of Laboratory); Kseniia Faiskanova and Mulham Najajreh (Lab assistants). Paid support: Monique Imhof (Accounting & Taxes); Jens-Michael Otte (Management Advisor)

EpiqClinInsights 2G will unlock biomarker discovery and validation in truly large cohorts via a...

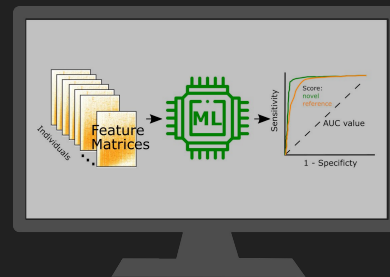
Fast & Automatable
Sample Preparation



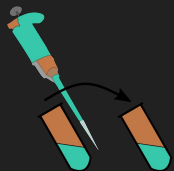
Sensitive & Reproducible
Mass Spectrometry



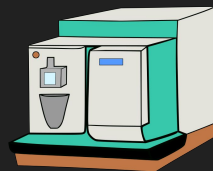
AI-driven & ID-agnostic
Biomarker Discovery



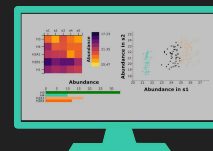
...and leave behind...



Manual
preps



Old
machines



Classical
data analysis

Revenue models

The EpiqClinInsights 2G platform will continue as a fee for service

But also licensed to companies/hospitals that possess the resources to implement it

Moreover, EpiQMAx will have its own biomarker discovery projects

Fee for service

Licensing

Royalty

Lead projects

LEAD PROGRAM	DESCRIPTION	PROGRESS
EpiCell (IZI)	<ul style="list-style-type: none">• Technical case• Improving CAR-T Cell manufacturing• Discovery of epigenetic biomarkers	10%
EpiCancer (TUM)	<ul style="list-style-type: none">• Oncology case• Ovarian specific epigenetic biomarker• Solid biopsy approach• Platform validation	25%
EpiSports (FPZ)	<ul style="list-style-type: none">• Lifestyle case for Consumer-end product• Molecular fingerprint of sports outcome	50%
EpiCoV (LMU)	<ul style="list-style-type: none">• En-vogue case• Long CoVid marker• Clinical publications with KOL	50%
EpiNutraceutical (Evonik)	<ul style="list-style-type: none">• Lifestyle case for Consumer-end product• Effect of food supplements on epigenetics	25%

We are looking for more partners, for these and other projects.



EpiQMAx

Decoding Epigenetics

Contact

EpiQMAx GmbH
Am Klopferspitz 19
82152 Planegg
Germany

www.epiqmax.com
info@epiqmax.com

Tel: +49 (0)89 2153 5730
Mobil: +49 (0)176 97 888 200



Bayern **Kapital** 
25 JAHRE Venture Capital für Bayern



Spin-off
Service^{LMU}



Health



Zusammen.
Zukunft.
Gestalten.



MITTELSTANDS- UND
WIRTSCHAFTSVEREINIGUNG
DER COUGS