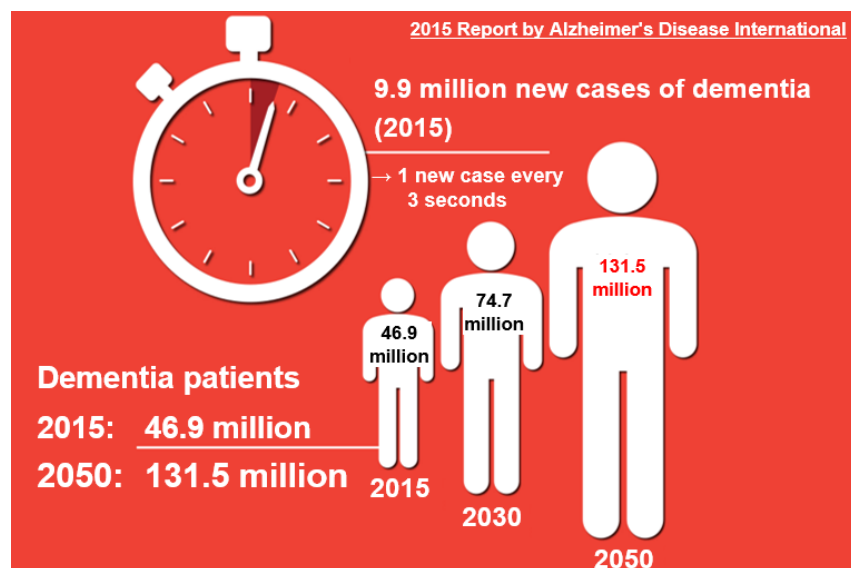


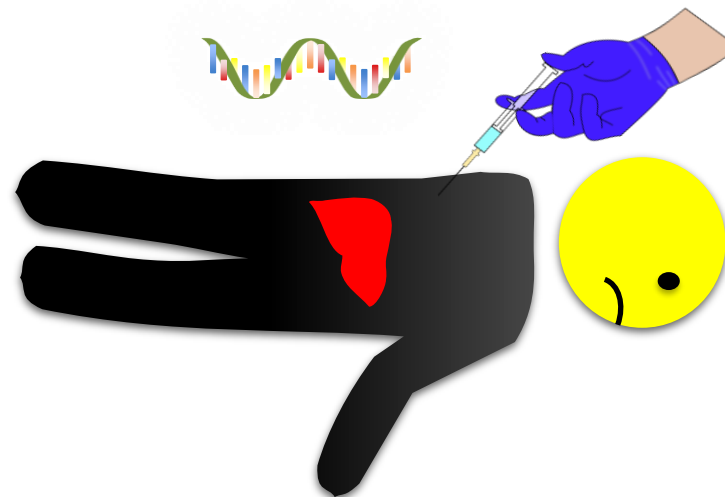
Innovations in Drug Delivery to Cure Brain Diseases



Antisense Oligonucleotides (ASO) delivery challenge



(From report by Alzheimer's Disease International)



Market Inflection

- Examples – FTD, ALS, PD
- Growing patient population
- Huge preclinical asset pool

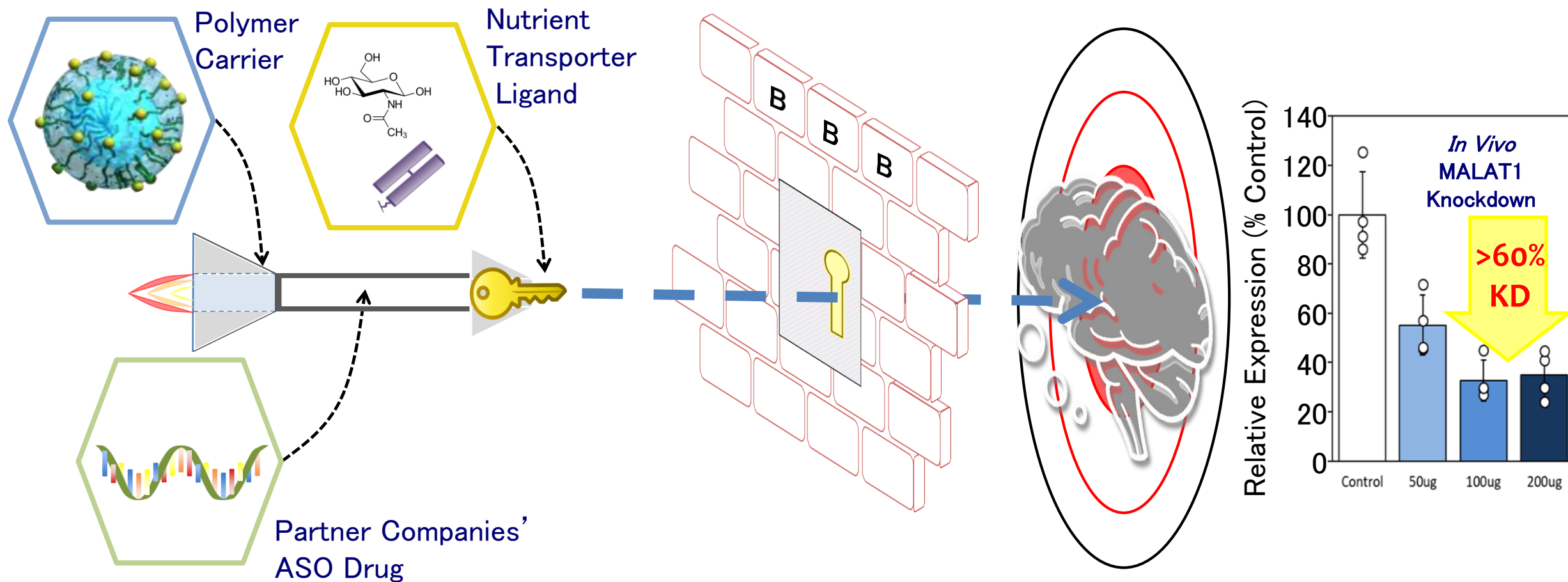
2019 \$2.1bn WW market (>10% CAGR)

Conventional delivery

- Liver toxicity in high doses
- Requires regular spinal cord injections
- Limits accessible indications

Problem = blood brain barrier (BBB)

Brain Access™ system for systemic ASO delivery

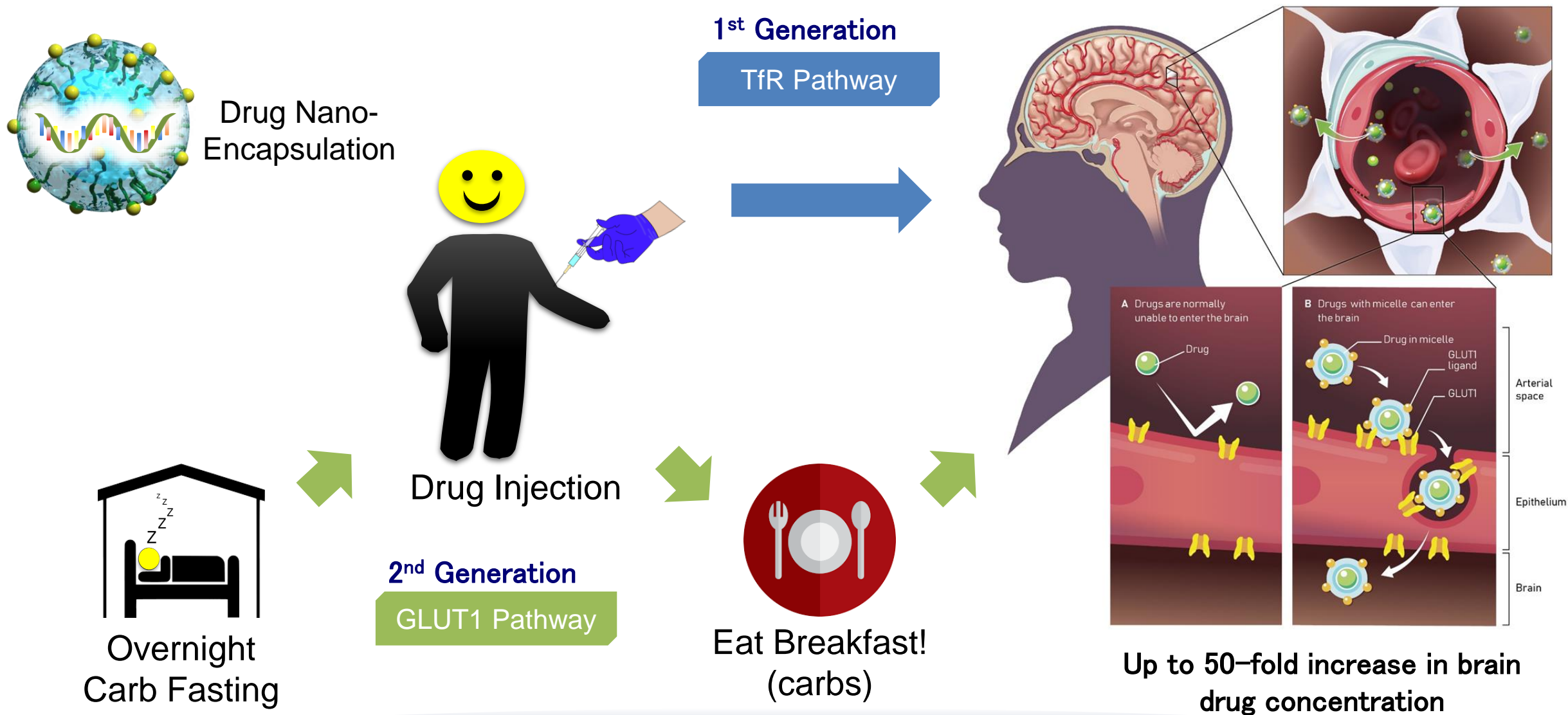


1. Simple injection into the blood

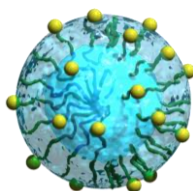
2. Reduced peak liver concentration

3. Clinically useful target knockdown within the brain

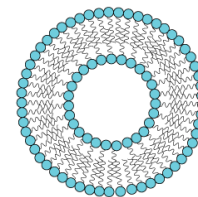
Patented, targeted micelle systems for ASO delivery



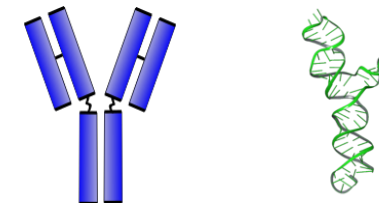
Micelle Advantages for ASO delivery



Braizon Micelles



Liposome / Exosome



Antibody / Peptide

No API modification required	✓	~	✗
Efficient API loading	>85%	~40%	>60%
API : Carrier ratio	~50:1	~15:1	1:1
ASO Lead Status	Rodent POC (70% KD)	Unknown	Rodent POC
Platform Lead Status / Modality	Rodent POC / ASO	Rodent POC (60% KD) / siRNA	Approval (JCR Pharma) / Enzyme replacement

Platform Technology

Technology Collaboration



Platform Licensing to Pharma Companies

- Upfront fee
- Milestone
- Royalties

Partnering Approach

- ✓ Formulation & CMC Support
- ✓ Tech Transfer & Product Logistics

Pipeline Development



Candidates

Focused on defined targets in:

- Neurodegeneration
- Infectious disease

TBA soon...

Expansion into mRNA, peptides, antibodies, small molecules

Collaboration Structure - Brain Access™

Feasibility Study

Joint Research

MTA

Evaluation
study

Contract

Micelle
formation

Performance
Evaluation

CMC

GLP-tox

IND

Clinical
study

- Model particles
- Micelle formation containing our model API
- Quality check

- Formulation of API provided by pharmaceutical company
- Quality check

- CMC
- Scaled production

- Manufacturing partner establishment
- Tech transfer

- Performance evaluation
- PK/PD study

- Study to assess drug efficacy
- PK/PD

- GLP-tox studies
- Data package

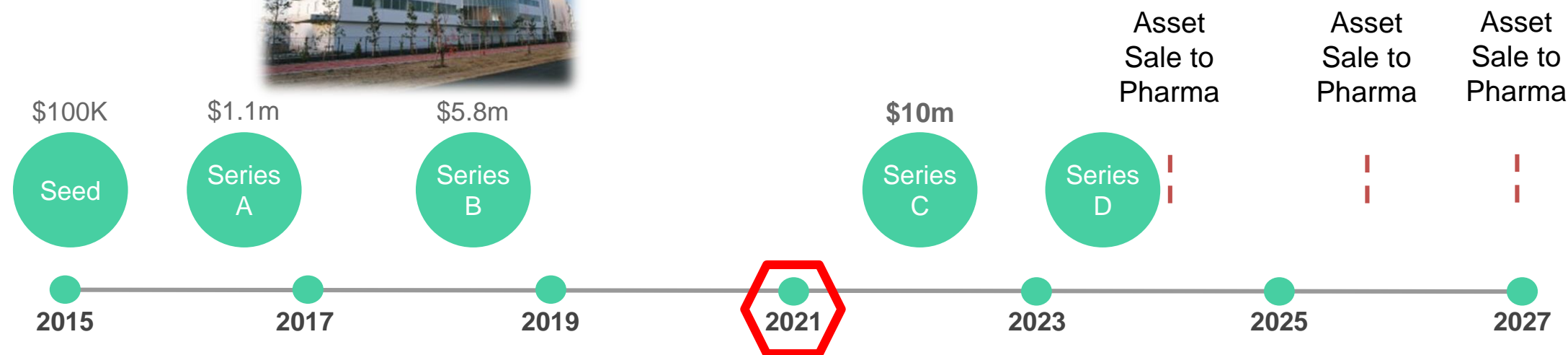
Milestone/License fees



Timeline & Milestones



Pipeline Business



Platform Business



Team Braizon

Leadership Team



Fumikazu Wanibuchi

President & CEO
VP of Clinical Development
Neurophysiology Ph.D.



Takanobu Nishikido

VP of Business Administration
and finance
C.P.A.



Philip Davy

Global Head of Business Development
and CEO of Braizon US, Inc
Bioengineering Ph.D.



Masato Chiba

VP of Research & Development
Biopharmaceutics Ph.D.



TAIHO PHARMA

Founders / Scientific Advisors



Dr. Kazunori Kataoka

General Director
iCONM
Professor of BioEngineering
University of Tokyo



Dr. Takanori Yokota

Professor of Neurological Science
Department Chair
Tokyo Medical Dental University

Board Members



Mariko Tosu

Founder
& Chairperson
Ph.D. MBA



Hiromichi Kimura

Ph.D. MBA



Tomohiro Anzai

Ph.D.



Mikio Kawahara

M.Sc. MBA

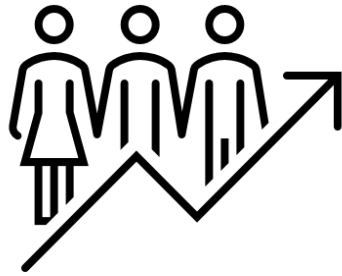


Makoto Takeuchi



Thank you!

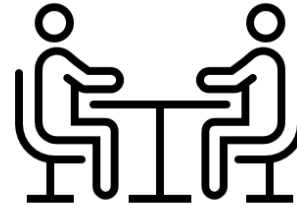
We are seeking.....



Investors

CEO

fwanibuchi@braizon.com



Technology
Partners

Business Development

pdavy@braizon.com



Novel
Therapeutics

R&D

mchiba@braizon.com