

# Kawasaki Life Science Cluster

In the Kawasaki City Area, the  
Agglomeration of Life Science Research  
Institutes and Industries

Kawasaki INnovation Gateway  
at SKYFRONT

June. 8th, 2021

Yutaka Kono  
Innovation Producer  
KAWASAKI INSTITUTE OF  
INDUSTRIAL PROMOTION



INSTITUTE OF INDUSTRIAL PROMOTION



川崎市



“**Kawasaki**” in the Edo era from the Hiroshige’s ukiyo-e,  
“Fifty-three post stations of Tokaido”





KING Skyfront and Mt. Fuji across Tama River  
from Haneda Airport

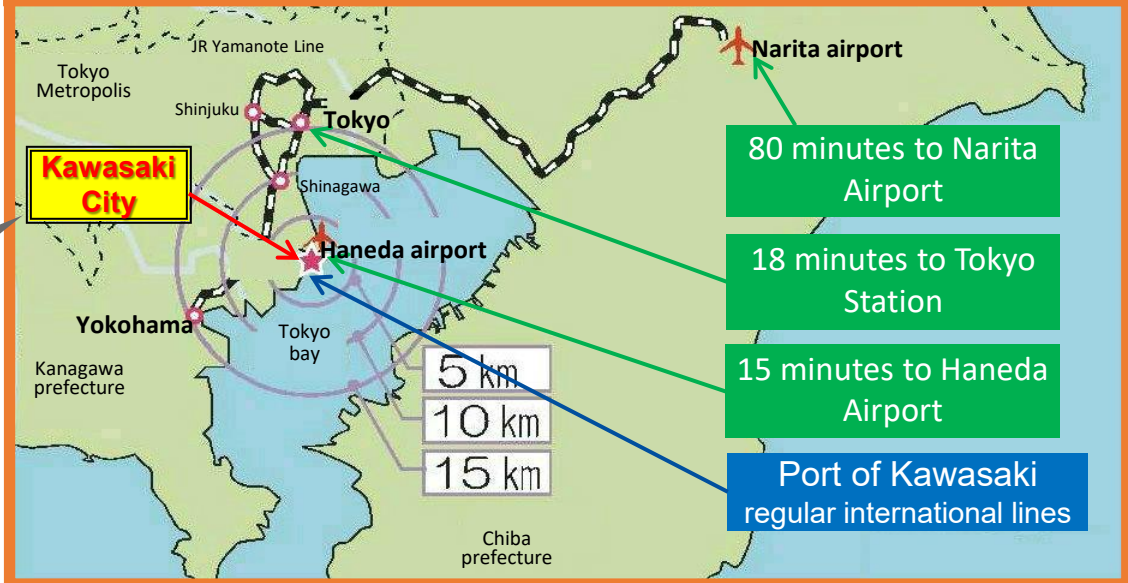
# Present Kawasaki City



# A Highly Convenient and Vibrant City



Located in the center of the National Capital Region, the city has the best accessibility via land, air, and sea



Population: 1,531,646 per.  
(As of Jan. 1, 2020)

Area: 144.35 km<sup>2</sup>

Gross City Product:  
51 billion USD (FY2015)

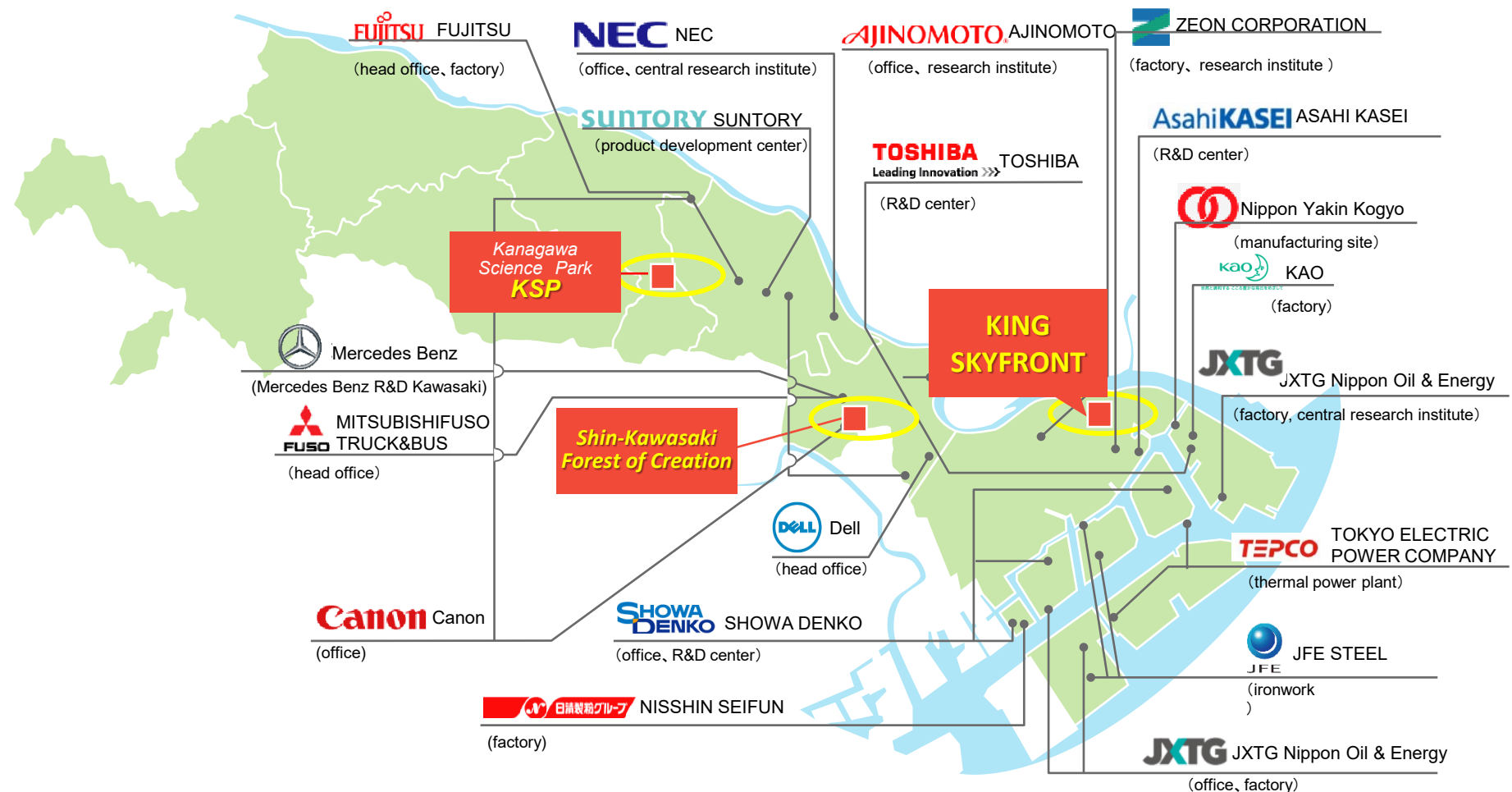
## Vibrant City Blessed with an Abundance of Human Resources

### <2016 Comparative Statistics of Major Japanese Cities>

- Birth rate: 0.99% Ranked 1st
- Average age: 42.8y Ranked 1st
- Percentage of population of Working age (15-64): 67.7% Ranked 1st
- Shipment value of manufactured goods per employee: ¥94.5mil. Ranked 1st
- Percentage of workers employed by academic/ R & D institutions: 5.5% Ranked 1st

(Provisional calculation by Kawasaki City based on categorization of business establishments)

# Global / Excellent Companies and Science Hubs



Over **400** R&D organizations

Over **1,200** manufacturing SMEs

⇒ convenient environment to procure high-tech parts

# Three Science Parks (Science Hubs)

## 1. *Kanagawa Science Park:KSP*

*The Lot Size: 55,000 m<sup>2</sup>,*

*The Working Population: 3400*

*30 Venture Companies /Total 50 companies*

## 2. *Shin-Kawasaki Forest of Creation*

*Kawasaki Business Incubation Centers*

*34 Venture Companies /Total 50 companies*

*7 Bioventure companies*

## 3. **KING SKYFRONT**

*70 Institutes/organizations<sub>6</sub>*



# KING Skyfront (Kawasaki Innovation Gateway)

## KING SKYFRONT

KING Skyfront is designated by the national government as an International Strategic Zone, helping to create a business-friendly environment and accelerate the future economic growth of Japan.

Kawasaki City

Tokyo  
Metropolitan  
Area

Tama  
River

Tokyo  
International  
(Haneda) Airport

# The Best Place to advance “Open Innovation”

**70** organizations ( as of Feb. 2021) ,500 researchers  
1400 workers

**Life Science & Environment Research Center  
(LiSE)**

**LiSE**



**CIEA**  
SINCE 1952



**Central Institute for Experimental Animals,  
Regenerative Medical and New Drug  
Development Research Center**

**Innovation Center Of NanoMedicine  
(iCONM)**

**iCONM**  
Innovation Center of Nanomedicine



**CYBERDYNE**

CYBERDYNE Inc. (1.5ha)  
Decided to open in 2014



**Japan Radioisotope Association**

**Japan Radioisotope  
Association**



**FUJIFILM**  
Value from Innovation



**FUJIFILM RI Pharma Co., Ltd.**

**DAIWA HOUSE INDUSTRY CO, LTD.** (4.6 h a)

Signed MOU regarding Urban Design on June 30, 2016

◆ **Kawasaki Tonomachi Tokyu REI Hotel** (186 rooms)

◆ **RGB2**

- Medtronic Innovation Center Japan
- Keio University Tonomachi Town Campus
- Tokyo Institute of Technology
- Kanagawa Medical Innovation School
- Kawasaki City KING Skyfront Management Center



◆ **RGB1**

- Convenience store and Post office
- Rental Laboratories and Offices

◆ **New Building**

- Shimadzu Tokyo Innovation Plaza  
Scheduled to Open in April 2021



Sangyo-doro Sta.

Keikyu Daishi I

Sangyo-doro



**Create Medic Co., Ltd**  
(0.3ha) Opened in June, 2016



**JSR Co.,LTD  
INC.**

(0.3ha) Decided to establish in 2017

**Kawasumi Laboratories,**

(0.4ha) Decided to establish in 2017

**National Institute of Health Sci**



**Tonomachi  
Entrance and Exit**

**Johnson & Johnson**  
JOHNSON & JOHNSON K.K.  
MEDICAL COMPANY



**Tokyo Science Center**

**Connection Road**  
Scheduled to be completed in 2020

**Tama River**

**Tokyo International Airport  
(Haneda)**

Haneda Airport International Terminal Sta.

Haneda Airport  
International Terminal Sta.

**TOKYO**

**International  
cargo Zone**



**PEPTIDREAM INC.**  
INNOVATIVE PEPTIDE THERAPEUTICS

**PeptiDream INC.**



**Life Innovation Center (Kanagawa Pref.)**



**ANA Tonomachi Business center**  
< Catering Center Building >  
< Administration Building >



**www.yodobashi.com**  
Yodobashi Camera Assembly Center



# Main organizations in KING SKYFRONT

## Drug discovery Drug discovery support



PeptiDream

**FUJIFILM**  
Value from Innovation



**CIEA**  
SINCE 1952

LEADING-EDGE NANOTECHNOLOGY  
**NanoCarrier®**

 **Gene Therapy**  
Research Institute

## Medical device

**Johnson & Johnson**  
JOHNSON & JOHNSON K.K.  
MEDICAL COMPANY

**Medtronic**  
Further, Together



 **sysmex**

 **KAWASUMI LABORATORIES, INC.**

## Regenerative medicine



Sumitomo Dainippon  
Pharma



Life Science Institute, Inc.

**FUJIFILM**  
Value from Innovation

**RICOH**

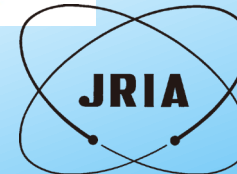
**LiC**  
Kanagawa

 **TakaRa**

## Research institute & University



**iCONM**  
Innovation Center of NanoMedicine



Japan  
Radioisotope  
Association



慶應義塾  
Keio University



東京工業大学  
Tokyo Institute of Technology

# Management



King SkyFront  
Management Center

Cooperation



Supporting & Cooperation

Private companies



Grant from  
National  
Government



KAWASAKI CITY



Cluster management role has centered on  
Kawasaki Institute of Industrial Promotion



Kawasaki City  
Government  
Building



*An auxiliary organization of the City of Kawasaki ,  
to provide various services for SMEs*

## **Profile of KIIP**

*Public interest incorporated foundation*

◆Foundation : April, 1988

◆Total business revenues in 2020

:1billion 458 million yen

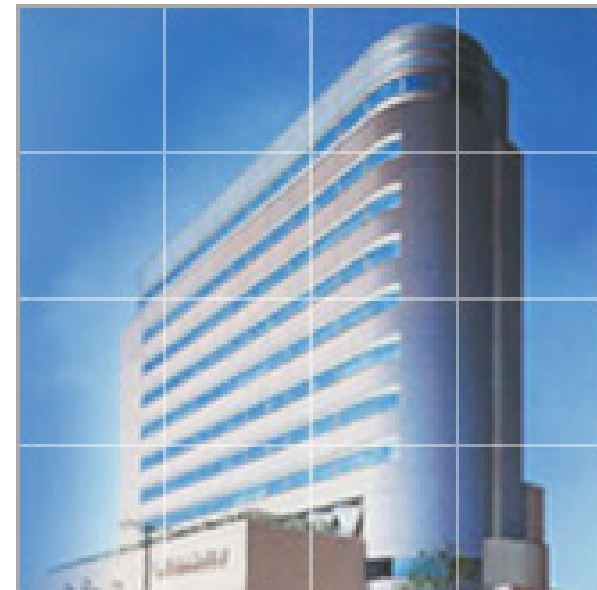
◆Employees 94 persons including

full time regular staff,

full time executive

part-time regular staff

dispatched from private sectors



# An auxiliary organization of the City of Kawasaki , to provide various services for SMEs

## Profile of K I P (Continued)

### ■ Main business

#### ① To support start-ups/SMEs to challenge new businesses

- Operation of incubation facilities- KBIC
- Competitions for business planning of entrepreneur
- Seminars for training entrepreneur

#### ② To Support SMEs for developing human resource

- Dispatch of consultants
- Consultation for management and technology at service desk
- Seminars
- Information dissemination through official publications, Internet and mail magazines
- Town revitalization centering around Kawasaki Station
- Industrial policy research

#### ③ FACILITY MANAGEMENT

- Leasing of conference rooms, hall and exhibition spaces
- Incubation Center =Kawasaki Business Incubation Center





# Organization chart and persons in charge



**Tonomachi King Skyfront Cluster Division**

**April 2020.**



## Professional line ◎ Organizer Dr. Michihiro Tsuchiya

- Pharmacy doctor
- Former President and Chairman of Mitsubishi Tanabe Pharma Corporation
- Chairman of Kinki Chemical Society, Chairman of Kansai Pharmaceutical Association, etc.
- Currently Director of Sumitomo Electric Industries, Ltd., Innovation Capital, Kyoto University Directors, etc.



### Scientists at the Division

**Innovation Producer  
Dr. Kono**



河野 裕

**Innovation Producer  
Dr. Matsukawa**



松川 泰久

**Manager  
Dr. Takahashi**



高橋 亘

## The Office staff

Office  
line



# Cooperation with international and national life science hubs

Undergoing collaboration with industry hubs and business hubs centered on international and domestic bio/life sciences.

## ● BioM Biotech Cluster Development GmbH (Germany)

With Germany München's Bio Clusters Management Organization (BioM), signed a memorandum of understanding related to economic exchanges focused on the fields of health, medicine and welfare. Serve as a bridge between companies and research institutes in both regions, and aim for international innovation creations by means of collaborating.



## ● Life Science Innovation Network Japan, Inc. (LINK-J)

Signed a memorandum of understanding on mutual collaboration related to the life sciences domain with LINK-J: a corporation based in Nihon-Bashi, Tokyo, where medical related enterprises gather and promotes open innovation and supports new industry creation. Undergo vigorous exchanges by means of joint sponsorship of events, programs, etc.; exchange of various information and transmissions; and mutual sharing of facilities.



Bio<sup>M</sup> CEO Prof. Dr. Horst Domdey



LINK-J Director Takashi Ueda



# Summary

- Kawasaki city is the most attractive cities in terms of the location, increasing the population and the industrial agglomerations .
- At King Sky Front, Seventy research organizations are currently located .
- King Sky Front is adopted as the site for conducting three big national projects on life science.
- Ecosystem will be established with open innovation in and around Kawasaki city.
- **International cooperation** should be put priority in the life science fields for promoting open innovation.

**We'd like to develop King Skyfront into  
a world class life science cluster!**

# **Thank you for your attention!**

***YUTAKA KONO***

***KAWASAKI INSTITUTE OF  
INDUSTRIAL PROMOTION***

***Secretariat***

***E-mail      [event-ksfcl@kawasaki-net.ne.jp](mailto:event-ksfcl@kawasaki-net.ne.jp)***

